

GE Healthcare

LOGIQ F8

I can diagnose with confidence



I can with the LOGIQ F8

With the LOGIQ* F8, you can afford an ultrasound system with excellent image quality for multiple disciplines. It's designed to help improve workflow, give you peace of mind, and help you provide your patients with enhanced care. This powerful combination will help you take patient care forward.

FOCUS ON IMAGE QUALITY

With the LOGIQ F8, exceptional image quality helps you provide your diagnosis. Clarity helps you detect abnormalities or small pathologies.

Enhanced image contrast helps you distinguish between tissue types. The ability to image both superficial and deep anatomy, with excellent penetration, helps you image confidently.

Incorporating established capabilities from GE's flagship ultrasound systems, the LOGIQ F8 provides you with an affordable way to offer the advantages of advanced, high-performance ultrasound to your patients.

Advanced tools and intuitive protocols help simplify image acquisition and enhance your overall image quality, with our suite of features including:

- Phase Inversion Harmonic Imaging
- CrossXBeam*
- Speckle Reduction Imaging

Forward-thinking capabilities allow you to enhance spatial and contrast resolution and sharpen border definition for outstanding image clarity.

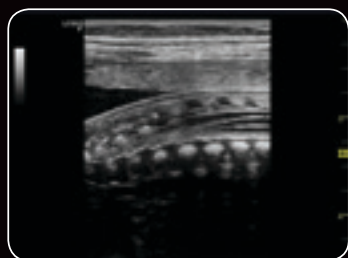
FACILITATE SHARED SERVICES

Thanks to the LOGIQ F8 shared services capabilities, users in multiple care areas can image patients of various ages and sizes in diverse clinical areas—all with one intuitive ultrasound machine. Use advanced applications and a wide range of transducers to perform exams, including:

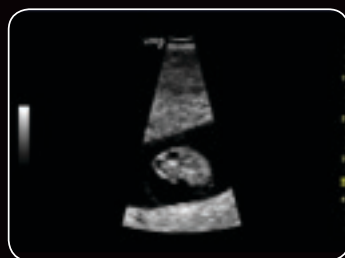
- Abdominal
- Obstetrical & Gynecological
- Small Parts
- Musculoskeletal
- Vascular & Peripheral Vascular
- Urological
- Pediatric
- Transcranial
- Cardiac



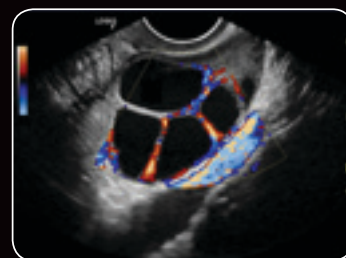
Gallbladder Polyp



Fetus Coccygeal Nerve



Early Pregnancy, showing Central Nervous System



Stimulated Ovary with CF

FURTHER YOUR CAPABILITIES

Advanced clinical capabilities such as Elastography, Auto IMT, 3D/4D, Tissue Velocity Imaging (TVI) with Q Analysis, and B-Steer are optional features that help you to expand the applications of your ultrasound practice. The LOGIQ F8 allows you to use one system that fits the needs of various departments.

FACILITATE FAST WORKFLOW

Ease-of-use tools on the LOGIQ F8 help you reduce scan time, standardize exam protocols and reports. Expertly optimized image settings such as Auto Optimization help you quickly adjust image quality with the touch of a button, while personalized, simple-to-change settings provide flexible exams. The potential result: enhanced productivity, standardized protocols, and additional patient focus.

Scan Assistant is a customizable scanning program that helps decrease keystrokes, shorten exam time and enhance exam consistency.¹

LOGIQ F8 is equipped with touch panel technology that helps reduce keystrokes by keeping relevant menus within reach.



FULFILL SUPPORT NEEDS

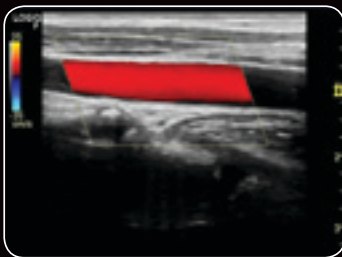
GE continues to support you beyond the product with education programs and online resources. You have access to product and applications videos to help ease your transition to a new system or support your need for more detailed information about advanced features.

Scan Coach is our on-demand education tool that can be used while live scanning. Scan Coach displays vital information which helps aid the user in getting the right scan plane.

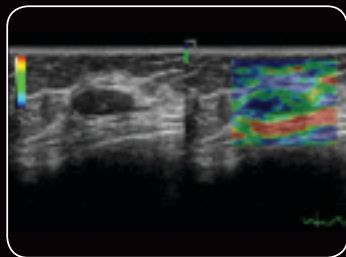
With three years of comprehensive service coverage included, the LOGIQ F8 systems give you value and peace of mind right from the start. If a service event ever occurs, GE is ready to respond quickly with customer support and modular repairs to get your system back in use.



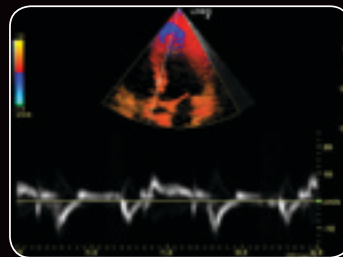
¹Data provided from an internal study performed by a third-party sonographer.



Carotid Artery



Breast with Elastography



Cardiac with Tissue Doppler Imaging



3D rendered fetal face for enhanced clinical confidence

About GE Healthcare

GE Healthcare provides transformational medical technologies and services to meet the demand for increased access, enhanced quality and more affordable healthcare around the world. GE (NYSE: GE) works on things that matter - great people and technologies taking on tough challenges. From medical imaging, software & IT, patient monitoring and diagnostics to drug discovery, biopharmaceutical manufacturing technologies and performance improvement solutions, GE Healthcare helps medical professionals deliver great healthcare to their patients.

GE Healthcare
Beethovenstr. 239
42655 Solingen, Germany

T 49 212-28 02-0
F 49 212-28 02-28

www.gehealthcare.com

UNITED KINGDOM

GE Medical Systems Ultrasound
71 Great North Road
Hatfield, Hertfordshire,
AL9 5EN
T 44 1707 263570
F 44 1707 260065

AMERICAS

GE Healthcare
9900 Innovation Drive
Wauwatosa, WI 53226
U.S.A.
T 1 888 202 5582

ASIA

GE Healthcare Clinical Systems ASIA
1105-1108 Maxdo Center
8 XingYi Road, Shanghai
200336
T 86 21 5257 4640
F 86 21 5208 0582



imagination at work

©2013 General Electric Company— All rights reserved.

General Electric Company reserves the right to make changes in specifications and features shown herein, or discontinue the product described at any time without notice or obligation.

GE, the GE Monogram, and imagination at work are trademarks of General Electric Company.

*Trademark of General Electric Company.

GE Healthcare, a division of General Electric Company.

DOC1462488